

\*TM11-5895-212-34P

DEPARTMENT OF THE ARMY TECHNICAL MANUAL

DIRECT SUPPORT AND GENERAL SUPPORT MAINTENANCE REPAIR PARTS AND  
SPECIAL TOOLS LISTS (INCLUDING DEPOT MAINTENANCE REPAIR PARTS AND  
SPECIAL TOOLS) RADAR SET AN/APR-9B (FSN 5895-620-0518)

Headquarters, Department of the Army, Washington, D.C.  
21 December 1973

*Current as of May 1973*

	Paragraph	Page
Section I. INTRODUCTION		
<b>Scope</b> .....	1-1	2
<b>General</b> .....	1-2	2
<b>Explanation of columns</b> .....	1-3	2
<b>Special information</b> .....	1-4	4
Location of repair parts .....	1-5	4
Abbreviations (Not applicable) .....	1-6	4
Reporting of equipment publication Improvemens .....	1-7	4
II. REPAIR PARTS LIST .....		6
III. SPECIAL TOOLS, TEST AND SUPPORT EQUIPMENT (Not applicable)		
IV. INDEX-FEDERAL STOCK NUMBER AND REFERENCE NUMBER CROSS-REFERENCE TO FIGURE AND ITEM NUMBER .....		8

\*This manual supersedes TM11-5895-212-35P, 28 July 1960.

# SECTION I INTRODUCTION

## 1-1. Scope

This manual lists repair parts and special tools required for the performance of direct support, general support, and depot maintenance of the AN/ARR-9B. The PCCN for the AN/APR-9B is GEWABM for all models.

## 1-2. General

This repair parts and special tools list is divided into the following sections:

**a. Repair Parts List—Section II.** A list of repair parts authorized for the performance of maintenance at the direct support, general support, and depot level. This repair parts list is arranged in alphabetical order.

**b. Special Tools, Test and Support Equipment—Section III.** Not applicable.

**a. Index - Federal Stock Number and Reference Number Cross-Reference to Figure and Item Number - Section IV.** A list, in ascending numerical sequence, of all Federal stock numbers appearing in the listings, followed by a list, in alphabetic sequence of all reference numbers appearing in the listings. Federal stock number and reference numbers are cross-referenced to each illustration figure and item number or reference designation appearance.

## 1-3. Explanation of Columns

The following provides an explanation of columns found in the tabular list.

**a. Source, Maintenance, and Recoverability Codes (SMR).**

(1) Source code. Indicates the manner of acquiring support items for maintenance, repair, or overhaul of end items. Source codes are—

Code	Explanation
PA-Item procured and stocked for anticipated or known usage.	
PB-Item procured and stocked for insurance purposes because essentiality dictates that a minimum quantity be available in the supply systems.	
PC-Item procured and stocked and which otherwise would be coded PA except that it is <b>d e t e r i o r a t i v e</b> .	
PD-Support item, excluding support equipment, procured for initial issue or outfitting and stocked only for subsequent or additional initial issues or outfitting. Not subject to automatic	

Code	Explanation
	initial issue or outfitting to specified maintenance repair activities.
PF—	Support equipment which will not be stocked but which will be centrally procured on demand.
PG—	Item procured and stocked to provide for sustained support for the life of the equipment. It is applied to an item peculiar to the equipment which because of probable discontinuance or shutdown of production facilities would prove _____ to reproduce at a later time.
KD—	An item of depot overhaul/repair kit and not purchased separately. Depot kit defined a kit that provides items required at the time of overhaul or repair.
KF—	An item of a maintenance kit and purchased separately. Maintenance kit defined as a kit that provides an item that can be replaced at organizational or direct support or general support levels of maintenance
KB—	Item included in both a depot overhaul/repair kit and a maintenance kit.
MO—	Item to be manufactured or fabricated at organizational level.
MF—	Item to be manufactured or fabricated at direct support maintenance level.
MH—	Item to be manufactured or fabricated at general support maintenance level.
MD—	Item to be manufactured or fabricated at depot maintenance level.
AO—	Item to be assembled at organizational level.
AF—	Item to be assembled at direct support maintenance level.
AH—	Item to be assembled at general support maintenance level.
AD—	Item to be assembled at depot maintenance level.
XA—	Item is not procured or stocked because the requirements for the item will result in the replacement of the next higher assembly.
XB—	Item is not procured or stocked. If not available through salvage, requisition.
XC—	Installation drawing, diagram instruction sheet, field service drawing, that is identified by manufacture&part number.
XD—	Support items can be requisitioned with justification.

### NOTE

Cannibalization or salvage may be used as a source of supply for any items source coded above except those coded XA and aircraft support items as restricted by AR 700-42.

(2) *Maintenance code.* Maintenance codes are assigned to indicate the levels of maintenance authorized to USE and REPAIR support items. The maintenance codes are entered in the third and fourth positions of the Uniform SMR Code Format as follows—

(a) *Use (third position).* The maintenance code entered in the third position indicates the lowest maintenance level authorized to remove, replace, and use the support item. The maintenance code entered in the third position indicates one of the following levels of maintenance.

<i>Code</i>	<i>Application/Explanation</i>
O	Support item is removed, replaced, used at the organizational level of maintenance.

**NOTE**

A code "C" may be used in this position to denote crew or operator maintenance performed within organizational maintenance.

F—Support item is removed, replaced & used at the direct support maintenance level\*

H—Support item is removed, replaced, used at the general support maintenance.

D—Support items that are removed, replaced, used at depot only.

(b) *Repair (fourth position).* The maintenance code entered in the fourth position indicates whether the item is to be repaired and identifies the lowest maintenance level with the capability to perform complete repair (i.e., all authorized maintenance functions). When a maintenance code is not used a dash (-) sign is entered. For multi-service equipment/systems or when a code is entered, this position will contain one of the following maintenance codes as assigned by the service(s) that require the code—

<i>Code</i>	<i>Application/Explanation</i>
O	The lowest maintenance level capable of complete repair of the support item is the organizational level.
F	The lowest maintenance level capable of complete repair of the support item is direct support.
H	The lowest maintenance level capable of complete repair of the support item is general support.
D	The lowest maintenance level capable of complete repair of the support item is the depot level.
L	Repair restricted to designated Specialized Repair Activity.
Z	Non-repairable. No repair is authorized.
B	No repair is authorized. The item may be reconditioned by adjusting, lubricating, etc., at the user level. No parts or special tools are procured for the maintenance of this item.

(3) *Recoverability code.* Recoverability codes are assigned to support items to indicate the disposition action on unserviceable items. The recoverability code is entered in the fifth position of the uniform SMR Code Format as follows—

<i>Code</i>	<i>Explanation</i>
Z	Nonrepairable item. When unserviceable, condemn and dispose at the level indicated in the first digit of the maintenance code.
O	Repairable item. When uneconomically repairable, condemn and dispose at organizational level.
F	Repairable item. When uneconomically repairable, condemn and dispose at the direct support level.
H	Repairable item. When uneconomically repairable, condemn and dispose at the general support level.
D	Repairable item. When beyond lower level repair capability, return to depot. Condemnation and disposal not authorized below depot level.
L	Repairable item. Repair, condemnation, and disposal not authorized below depot/Specialized Repair Activity level.
A	Item requires special handling or condemnation procedures because of specific reasons (i.e., precious metal content, high dollar value, critical material or hazardous material).

b. *Federal Stock Number.* Indicates the Federal stock number assigned to the item and will be used for requisitioning purposes.

c. *Description.* Indicates the Federal item name and a minimum description required to identify the item. The last line indicates the reference number followed by the applicable Federal Supply Code for Manufacturer (FSCM) in parentheses. The FSCM is used as an element in item identification to designate manufacturer or distributor or Government agency, etc., and is identified in SB 708-42.

d. *Unit of Measure (U/M).* Indicates the standard or basic quantity by which the listed item is used in performing the actual maintenance function. This measure is expressed by a two-character alphabetical abbreviation; e.g., ea, in, pr, etc., and is the basis used to indicate quantities and allowance in subsequent columns. When the unit of measure differs from the unit of issue, the lowest unit of issue that will satisfy the required units of measure will be requisitioned.

e. *Quantity Incorporated in unit.* This column indicates the quantity of the item used in the equipment. Subsequent appearances of the same item in the same assembly are indicated by the letters "REF".

f. *30-Day DS/GS Maintenance Allowances.*

NOTE

Allowances in GS column are for GS maintenance only.

(1) The repair parts indicated by asterisk entries in separate allowance columns for DS and GS represent those authorized for use at that category of maintenance to be requisitioned on an "as required" basis, until stockage is based on demand in accordance with AR 713-2.

(2) Allowance quantities are indicated in the special tool lists section for tools, TMDE, and other support equipment.

*g. 1-Year Allowances Per 100 Equipments/Contingency Planning Purposes.* Column intentionally left blank.

*h. Depot Maintenance Allowance Per 100 Equipments.* This column indicates opposite the first appearance of each item the total quantity authorized for depot maintenance of 100 equipments.

i. Illustration. This column is divided as follows:

(1) *Figure* number. Indicates the figure number of the illustration on which the item is shown in TM 11-5895-216-24.

(2) Item number. Indicates the item number or reference designation used to reference the item in the illustration.

1-4. Special Information

e. Usable on codes are included in column 3. Uncoded items are applicable to all models. Identification of the usable on codes used in this publication are--

Code	Used on
	AN/APR-9B

*b.* The following publications pertain to the equipment and its components:

TM 11-5895-212-10P Operator% Maintenance Repair Parts and special Tool Lists for Radar Set AN/APR-9B.

TM 11-5895-212-20P Organizational Maintenance Repair Parts and Special Tools Lists (FSN 5895-620-0518).

1-5. Location of Repair Parts

*a.* This manual contains one cross-reference index (see IV) to be used to locate a repair part when either the Federal stock number or reference number (manufacturer's part number) is known. The first column in the index is prepared in numerical or alphanumeric sequence in ascending order. The reference numbers (manufacturer's part numbers) are listed immediately following the last listed Federal stock number in the index of Federal stock numbers.

*b.* When the Federal stock number or reference number is known, follow the procedures given in (1) and (2) below.

(1) Refer to the index of Federal stock numbers (sec IV) and locate the Federal stock number or reference number. The FSN and reference number are cross-referenced to the applicable figure and item number or reference designation.

(2) Refer to the repair parts list (sec II) and locate the figure number (col 10a) and item number or reference designation (col 10b) as noted in the FSN index.

*c.* When the figure and item number or reference designation are known, scrutinize columns 10a and 10b of the repair parts list (sec II) until the item is located.

*d.* When the FSN, reference number, figure number, item number and reference designation are not known, scrutinize column 3 of the repair parts list (sec II), which is arranged in alphabetical order.

1-6. Abbreviations

Not applicable.

1-7. Reporting of Equipment Publication

Improvements

The reporting of errors, omissions, and recommendations for improving this publication by the individual user is encouraged. Reports should be submitted on DA Form 2028 (Recommended Changes to Publications) and forwarded direct to Commander, US Army Electronics Command, ATTN: AMSEL-MA-SEW, Fort Monmouth, N.J., 07703.

(Next printed page is 6)

FEDERAL STOCK NUMBER	DESCRIPTION	UNIT OF MEAS	OFF USE UNIT	30-DAY MAXIMUM ALLOWANCE			30-DAY MAXIMUM ALLOWANCE			LVS NEW PER 100 EQUIP CONTACT	REPT MANT 100 EQUIP	ILLUSTRATION	
				(a)	(b)	(c)	(a)	(b)	(c)			(a)	(b)
				1-20	21-30	31-100	1-20	21-30	31-100			FIGURE NO.	ITEM NO.
5935-223-8675	GROUP 0001 RADAR SET AN/APA-20 ADAPTER, CABLE TO CONNECTOR NO-REF-DESIG.	EA	3	*	*	*	*	*	*		4		
5935-983-3115	ADAPTER, CABLE TO CONNECTOR NO-REF-DESIG.	EA	4	*	*	*	*	*	*		4		
5939-889-0766	ADAPTER, CABLE TO CONNECTOR NO-REF-DESIG.	EA	2	*	*	*	*	*	*		4		
5933-223-0372	ADAPTER, CABLE TO CONNECTOR NO-REF-DESIG.	EA	2	*	*	*	*	*	*		4		
5935-280-1935	ADAPTER, CABLE TO CONNECTOR NO-REF-DESIG.	EA	2	*	*	*	*	*	*		4		
5935-280-2354	ADAPTER, CABLE TO CONNECTOR NO-REF-DESIG.	EA	2	*	*	*	*	*	*		4		
5935-280-2192	ADAPTER, CABLE TO CONNECTOR NO-REF-DESIG.	EA	4	*	*	*	*	*	*		4		
5935-109-6901	CONNECTOR, PLUG, ELECTRICAL P1102.....	EA	1	*	*	*	*	*	*		3	7-22	
5935-539-0246	CONNECTOR, PLUG, ELECTRICAL P102.....	EA	1	*	*	*	*	*	*		3	7-2	P162
5935-173-3893	CONNECTOR, PLUG US-240B/U P103.....	EA	4	*	*	*	*	*	*		3	7-5	P103
5935-230-1548	CONNECTOR, PLUG, ELECTRICAL P516.....	EA	1	*	*	*	*	*	*		3	7-15	P516
5935-197-0585	CONNECTOR, PLUG, ELECTRICAL P907.....	EA	1	*	*	*	*	*	*		3	7-20	P907
5935-149-3137	CONNECTOR, PLUG, ELECTRICAL P602.....	EA	1	*	*	*	*	*	*		3	7-15	P602
5935-280-2829	CONNECTOR, PLUG, ELECTRICAL P515.....	EA	1	*	*	*	*	*	*		3	7-15	P515
5935-240-9280	CONNECTOR, PLUG, ELECTRICAL P1101.....	EA	1	*	*	*	*	*	*		3	7-22	
5935-295-4814	CONNECTOR, PLUG, ELECTRICAL P1302.....	EA	1	*	*	*	*	*	*		3		
5935-199-2642	CONNECTOR, PLUG, ELECTRICAL P904.....	EA	1	*	*	*	*	*	*		3	7-20	P904
5935-258-8003	CONNECTOR, PLUG, ELECTRICAL P906.....	EA	1	*	*	*	*	*	*		3	7-20	P906
5935-537-4272	CONNECTOR, PLUG, ELECTRICAL P101.....	EA	1	*	*	*	*	*	*		3	7-5	P101
5935-296-8932	CONNECTOR, PLUG, ELECTRICAL P601.....	EA	1	*	*	*	*	*	*		3	7-19	P601
5935-258-3777	CONNECTOR, PLUG, ELECTRICAL P901.....	EA	2	*	*	*	*	*	*		3	7-20	P901
5935-258-3777	CONNECTOR, PLUG, ELECTRICAL P903.....	EA	REF	*	*	*	*	*	*		7-20	P903	
5935-537-4359	CONNECTOR, PLUG, ELECTRICAL P514.....	EA	1	*	*	*	*	*	*		3	7-15	P514
5935-636-8333	CONNECTOR, PLUG, ELECTRICAL P902.....	EA	1	*	*	*	*	*	*		3	7-20	P902
5935-539-2664	CONNECTOR, PLUG, ELECTRICAL P905.....	EA	1	*	*	*	*	*	*		3	7-20	P905
5935-665-4311	CONNECTOR, PLUG, ELECTRICAL P1301.....	EA	1	*	*	*	*	*	*		3		

SECTION II

TM11-5895-212-34P

10 SAC CODE	20 FEDERAL STOCK NUMBER	30 DESCRIPTION REFERENCE NUMBER & NPL CODE	40 UNIT OF MEAS	50 QTY INC OR UNIT	60 30-DAY RESERVE ALLOWANCE			70 30-DAY RESERVE ALLOWANCE			80 LVR BY PER CENT	90 REPORT GROUP	100 ILLUSTRATION	
					(a)	(b)	(c)	(a)	(b)	(c)			(a)	(b)
					1-20	21-30	31-100	1-20	21-30	31-100			FIGURE NO.	ITEM NO.
		CONTINUED												
PAD22	5340-491-6508	INS100010-20P (01349) GROUP 0000 MOUNTING WT-400/APR-9 WT-400/APR-9 MOUNT, RESILIENT A1001.....	EA	4	*	*	*	*	*	*		3		
PAD22	5340-597-6176	INS100010-20P (01349) GROUP 0000 MOUNTING WT-400/APR-9 WT-400/APR-9 MOUNT, RESILIENT A1901.....	EA	8	*	*	*	*	*	*		3		
PAD22	5340-697-1805	INS100010-20P (01349) GROUP 0000 MOUNTING WT-400/APR-9 WT-400/APR-9 MOUNT, RESILIENT A2002.....	EA	2	*	*	*	*	*	*		3		
PAD22	5340-597-6176	INS100010-20P (01349) GROUP 0000 MOUNTING WT-400/APR-9 WT-400/APR-9 MOUNT, RESILIENT A1901.....	EA	8	*	*	*	*	*	*		3		
PC022	5346-597-6821	INS100010-20P (01349) GROUP 0000 MOUNTING WT-400/APR-9 WT-400/APR-9 MOUNT, RESILIENT A2101A.....	EA	8	*	*	*	*	*	*		3		
PAD22	5340-597-6821	INS100010-20P (01349) GROUP 0000 MOUNTING WT-400/APR-9 WT-400/APR-9 MOUNT, RESILIENT A2101B.....	EA	REF	*	*	*	*	*	*				

SECTION IV

TM11-5895-212-34P

INDEX - FEDERAL STOCK NUMBER AND REFERENCE NUMBER  
CROSS-REFERENCE TO FIGURE AND ITEM NUMBER

STOCK NUMBER	FIGURE NO.	ITEM NO.	STOCK NUMBER	FIGURE NO.	ITEM NO.
5935-149-3137	T-15	P002	5935-293-8003	T-20	P006
5935-173-9839	T-5	P103	5935-286-2829	T-15	P515
5935-139-6801	T-22		5935-294-8932	T-19	P001
5935-197-0585	T-20	P007	5935-2537-4272	T-5	P101
5935-192-2642	T-20	P004	5935-537-4159	T-20	P514
			5935-539-3448	T-2	P102
5935-230-1548	T-15	P516	5935-539-2664	T-20	P005
5935-240-9228	T-22		5935-636-8333	T-20	P002
5935-258-3777	T-20	P001			
5935-258-3777	T-20	P003			

**By Order of the Secretary of the Army:**

**CREIGHTON W. ABRAMS**  
*General, United States Army*  
*Chief of Staff*

**Official:**

**VERNE L. BOWERS**  
*Major General, United States Army*  
*The Adjutant General*

**Distribution:**

To be distributed in accordance with DA Form 12-36 (qty rqr block No. 53) direct and general support maintenance requirements for AN/APF-9.

\* U.S. GOVERNMENT PRINTING OFFICE: 1973 O-840-886/3375A



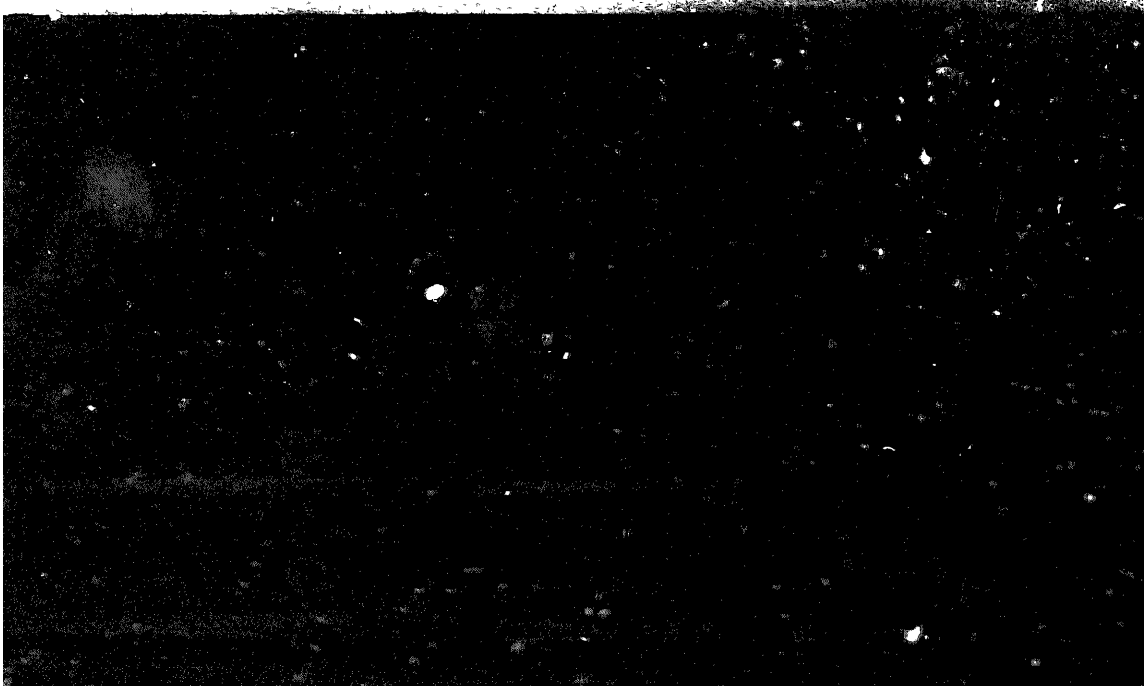
**END**

7-25-83

**DATE**

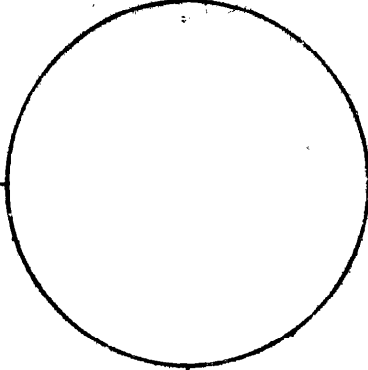
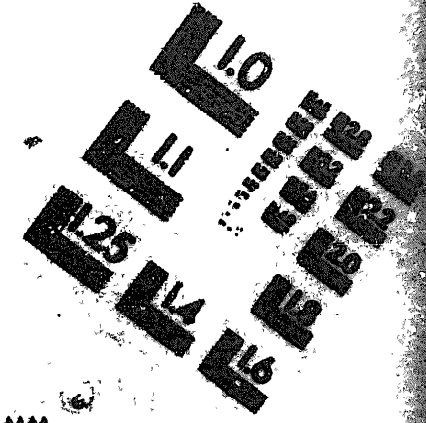
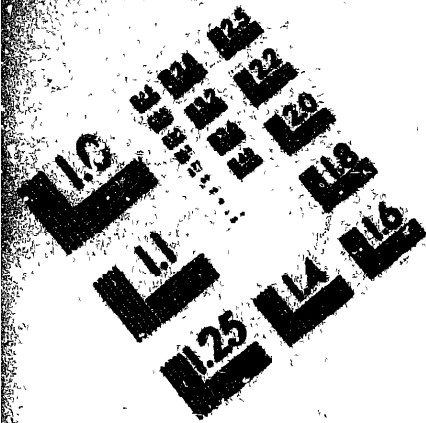


100  
101  
102  
103  
104  
105  
106  
107  
108  
109  
110  
111  
112  
113  
114  
115  
116  
117  
118  
119  
120  
121  
122  
123  
124  
125  
126  
127  
128  
129  
130  
131  
132  
133  
134  
135  
136  
137  
138  
139  
140  
141  
142  
143  
144  
145  
146  
147  
148  
149  
150  
151  
152  
153  
154  
155  
156  
157  
158  
159  
160  
161  
162  
163  
164  
165  
166  
167  
168  
169  
170  
171  
172  
173  
174  
175  
176  
177  
178  
179  
180  
181  
182  
183  
184  
185  
186  
187  
188  
189  
190  
191  
192  
193  
194  
195  
196  
197  
198  
199  
200



DEPARTMENT OF THE ARMY

MICROFORM TEST TARGET



150 MM

1.0 mm (e= .31 mm)

ABCDEFGHIJKLMN O PQRSTU VWXYZ 123456789  
abcdefghijklmnopqrstuvwxyz %&'()\*+,-./:;<=>@

1.5 mm (e= 1.09 mm)

ABCDEFGHIJKLMN O PQRSTU VWXYZ 123456789  
abcdefghijklmnopqrstuvwxyz %&'()\*+,-./:;<=>@

2.0 mm (e= 1.37 mm)

ABCDEFGHIJKLMN O PQRSTU VWXYZ  
abcdefghijklmnopqrstuvwxyz  
1234567890&c%/'%# 1/2 3/4 - - - - - \* & @ \*

2.5 mm (e= 1.77 mm)

ABCDEFGHIJKLMN O PQRSTU VWXYZ  
abcdefghijklmnopqrstuvwxyz  
1234567890&c%/'%# 1/2 3/4 - - - - - \* & @ \*

1.0 mm (e= .31 mm)

ABCDEFGHIJKLMN O PQRSTU VWXYZ 123456789  
abcdefghijklmnopqrstuvwxyz %&'()\*+,-./:;<=>@

1.5 mm (e= 1.09 mm)

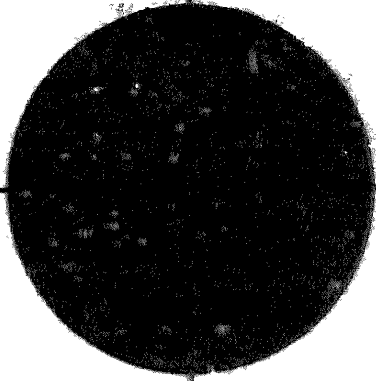
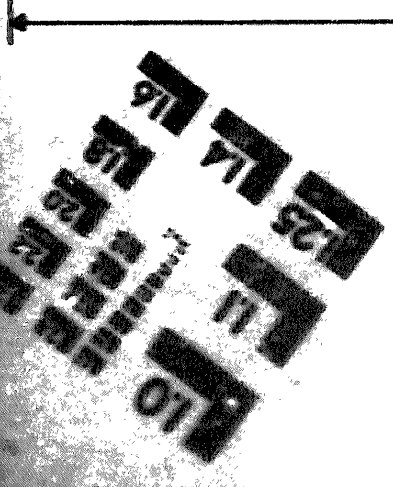
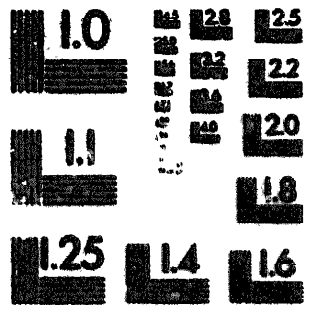
ABCDEFGHIJKLMN O PQRSTU VWXYZ 123456789  
abcdefghijklmnopqrstuvwxyz %&'()\*+,-./:;<=>@

2.0 mm (e= 1.37 mm)

ABCDEFGHIJKLMN O PQRSTU VWXYZ  
abcdefghijklmnopqrstuvwxyz  
1234567890&c%/'%# 1/2 3/4 - - - - - \* & @ \*

2.5 mm (e= 1.77 mm)

ABCDEFGHIJKLMN O PQRSTU VWXYZ  
abcdefghijklmnopqrstuvwxyz  
1234567890&c%/'%# 1/2 3/4 - - - - - \* & @ \*



200 MM

250 MM